

PLANTING SCHEDULE

KEY	SCIENTIFIC PLANT NAME	COMMON PLANT NAME	SIZE	QTY	INVT	EXLT
Trees and Shrubs						
A	Ilex x Red Beauty	Red Beauty Holly	5'-6"	3	700	2100
B	Prunus laurocerasus 'Otto Luyken'	Otto Luyken Cherry Laurel	2'-2.5'	11	140	1540
C	Syringa pubescens subsp. patula 'Miss Kim'	Miss Kim Korean Lilac	5 gal	3	125	375
D	Rhododendron 'P.J.M.'	P.J.M. Rhododendron	10 gal	7	260	1820
**E	Prunus serrulata 'Kwanzan'	Kwanzan Flowering Cherry	2.5'-3' cal	1	823	823
F	Rosa 'Peach Drift'	Peach Drift Rose	3 gal	5	72	360
G	Buxus 'Green Mountain'	Green Mountain Boxwood	21'-24"	17	135	2295
H	Dryas grails 'Nikko'	Silver Dicotilla	3 gal	7	81	567
I	Spirea bumalda japonica 'Magic Carpet'	Magic Carpet Spirea	3 gal	13	71	923
J	Picea pungens glauca 'Globoea'	Dwarf Globe Blue Spruce	2.5'-3'	2	485	970
K	Buxus micro var. japonica 'Winter Gem'	Winter Gem Boxwood	21'-24"	20	168	3360
**L	Magnolia wilsonii 'Royal Star'	Royal Star Magnolia	6'-7'	2	612	1224
M	Juniperus chinensis 'Gold Lace'	Gold Lace Juniper	15'-18"	14	59	826
N	Larrea tridentata 'faux' 'Sioux'	Sioux Creeper Mistle	8'-10'	1	840	840
Q	Ilex crenata 'Green Lustre'	Green Lustre Japanese Holly	3 gal	7	81	567
**R	Prunus x elaeagnus	Elm Cherry	2.5'-3'	1	823	823
Q	Hydrangea macro 'Nikko Blue'	Nikko Blue Hydrangea	5 gal	5	105	525
R	Ilex crenata 'Chesapeake'	Chesapeake Japanese Holly	7 gal	9	135	1215
**S	Acer palmatum atropurpureum 'Bloodgood'	Bloodgood Japanese Maple	8'-10'	1	700	700
U	Rosa 'Radson' DM Knock Out	Double Pink Knock Out Rose	3 gal	3	72	216
V	Hydrangea macrophylla 'Twist-n-Shout'	Twist-n-Shout Hydrangea	5 gal	2	105	210
**W	Stewartia pseudocamellia	Japanese Stewartia	7'-8"	1	773	773
**X	Chionodoxa viticincta	White Fringe Tree	6'-8"	1	765	765
**Y	Quercus garbiniana	Sawtooth Oak	2'-2.5' cal	2	413	826
**Z	Cornus kousa var. chinensis	Kousa Dogwood	8'-10'	6	690	4140
**1	Magnolia virginiana	Sweetbay Magnolia	8'-10'	3	682	2046
**2	Cercidiphyllum magnificum 'Pendula'	Katsura Tree	2'-2.5'	1	413	413
**3	Prunus subhirtella 'Autumnalis'	Autumn Blooming Higan Cherry	2'-2.5'	3	682	2046

Perennials and Ground Cover						
a	Salvia 'May Night'	Meadow Sage	1 gal	14	14	196
b	Vinca minor	Periwinkle	flw/50	7	95	665
d	Azalea chinensis 'Visions in Pink'	Visions in Pink Azalea	1 gal	18	16	288

General						
	Black Dyed Mulch	cy	22	95	2090	
	Sod	SF	0.65	24500	15925	

Irrigation
 We propose to furnish all labor and material to install an irrigation system to water all areas on the plans. 13770
 The work will involve installing the following irrigation equipment:
 Rainbird Drip
 Rainbird Spray Heads
 Rainbird Gear Heads
 Rainbird Zone Valves
 Controller
 Rain sensor
 PVC piping for Mains
 Poly for Zone lines
 Irrigation wire
 Zone Valve Boxes
 Waterproof wire nuts
 Miscellaneous fittings, glue, primer, etc.
 We will provide and install an approved backflow preventer to protect the domestic water supply.
 PA One Call Utility Clearance will be notified prior to beginning any work. Any private utilities (dog fence, drainage pipe, etc) should be marked by homeowner or communicated to Gordon Eadie prior to installation of the irrigation system.
 For your convenience we plan to install the controller in a yet to be determined location and it will require a 110v electrical outlet as a power source.
 All sleeves are to be installed by the General Contractor.
 We will warranty our labor on this installation for one full year. We have also included the winterization to take place in fall 2021 and the start up of the system in the spring of 2022.
 All materials will be commercial grade and will carry a full five year parts warranty with the exception of the controller, which has a three-year warranty from the manufacturers. (Note: Warranties do not cover misuse, abuse, or acts of God or nature)

Compensatory Trees						
**	denotes compensatory tree					
Required	22					
Provided	22					

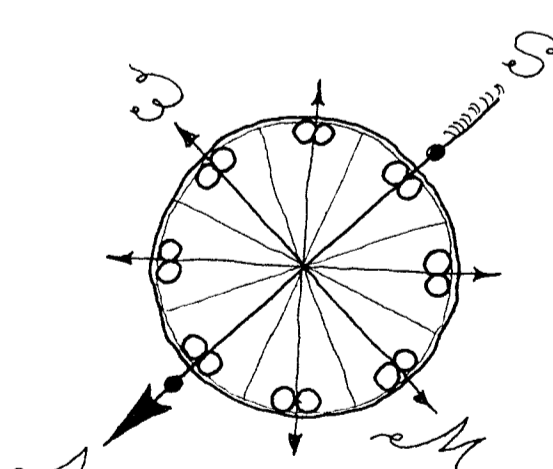
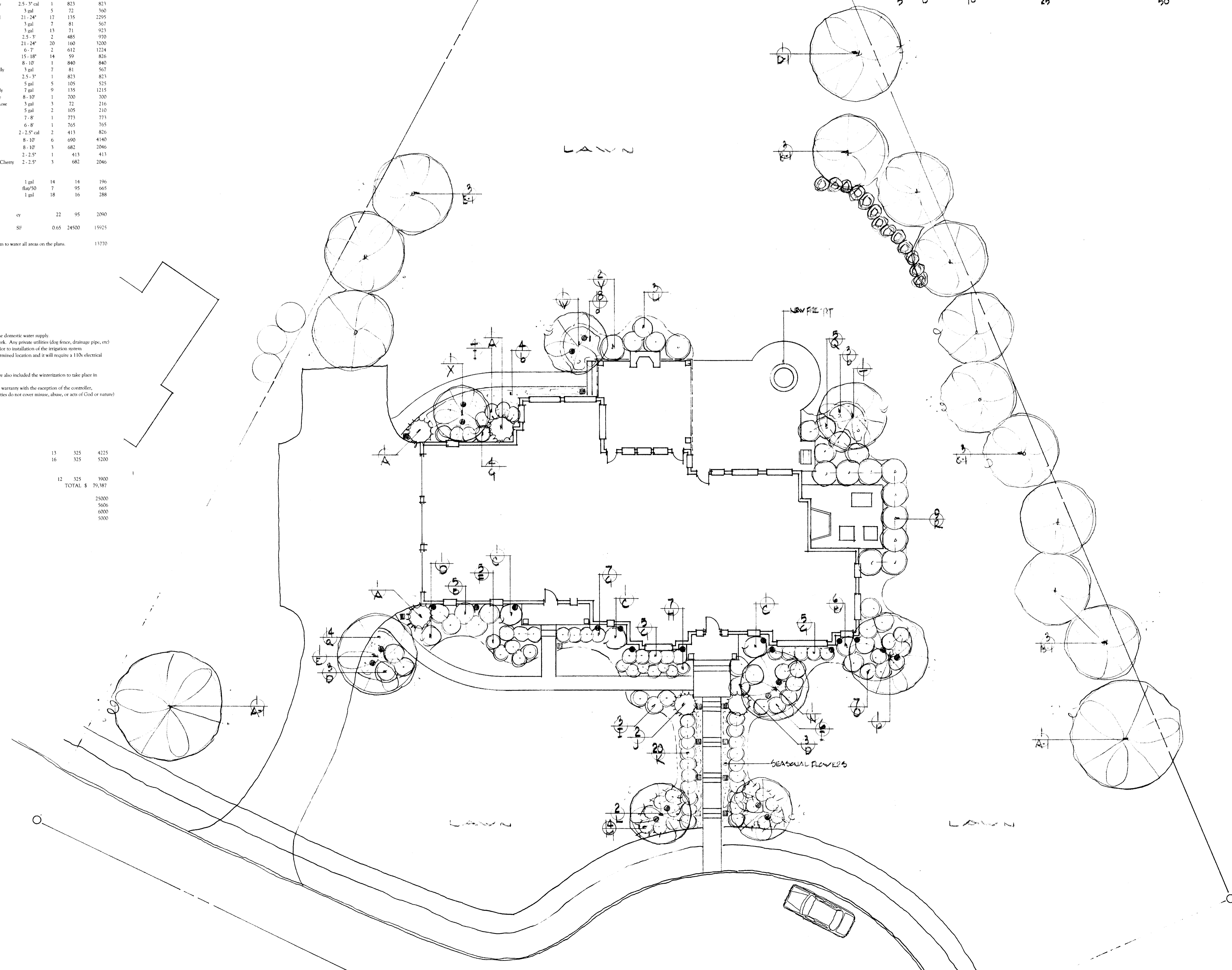
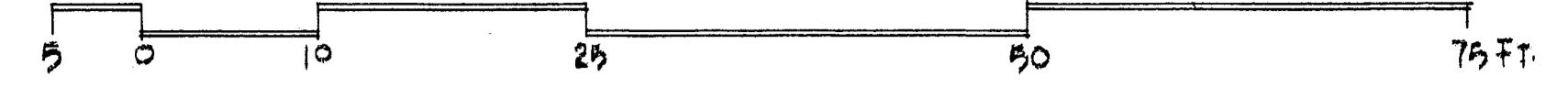
Lighting						
Landscape Path Lights	13	325	4275			
Well Lights	16	325	5200			
Architectural Well Lights	12	325	3900			
TOTAL			\$ 79,187			

Allowances by builder						
Planting			25000			
Compensatory Trees			5606			
Sod/Seed			6000			
Irrigation			5000			

Lighting Legend

- Well Light ●
- Path Light ■
- Accent Light ▼
- Puck Light ○
- Post Light ⊕
- String Lights ○

SCHEMATIC



Revisions:
20 April 2021

PROJECT:
New Landscape For:
Karen and Eric Strid
29 Ivy Lane
Villanova, PA 19085

DESIGNED BY: D H McCRAY, ASLA

GORDON·EADIE
LANDSCAPE AND DESIGN

DRAWING NUMBER:
DATE: 15 April 2021
SCALE: 1" = 10'-0"

GORDON EADIE LANDSCAPE AND DESIGN 435 VALLEY PARK RD. PHOENIXVILLE, PA 19460 PH: 610-933-4410